

THE WORDS "SANITARY", OR THE APPLICABLE CITY/VILLAGE NAME SHALL BE CAST IN THE LID.

SPACE BETWEEN PIPE AND WALL OF MANHOLE TO BE COMPLETELY FILLED WITH NON-SHRINKING GROUT.

PLASTIC MANHOLE STEPS 1'-4" O.C. M.A. INDUSTRIES CAT. NO. M.A. PS IPF OR APPROVED EQUAL.

CONCRETE ENCASEMENT

CAST IRON MANHOLE FRAME AND SOLID LID, LID WITH CONSEALED PICKHOLE AND WATERTIGHT GASKET NEENAH FDY. CO. CAT. # R-1712-B, E. JORDAN IRON WORKS CO. CAT. # 1051-3 (EXTRA HEAVY DUTY COVER) OR APPROVED EQUAL IN PAVED AREAS IN OTHER AREAS USE R-1772-B (NEENAH), 1022-1 (MED. COVER) (E. JORDAN), IN NON-PAVED AREAS SET FRAME IN BUTYL ROPE.

FLEXIBLE RUBBER WATERTIGHT CONNECTOR PER A.S.T.M. C-923

8' MAX. (2 RINGS TOTAL) PRECAST CONCRETE ADJUSTING RINGS SET IN BUTYL ROPE. ADAPTOR-SEAL, INFI-SHIELD, CANUSA (WRAPID SEAL) CHIMNEY SEALS OR APPROVED EQUAL IS REQUIRED FOR ALL FRAMES AND ADJUSTING RINGS IN ALL AREAS OR APPLICATIONS.

PRECAST REINFORCED CONCRETE MANHOLE SECTION(S) A.S.T.M. C-478 SET IN BUTYL ROPE-SEAL LIFT LUG HOLES WATERTIGHT.

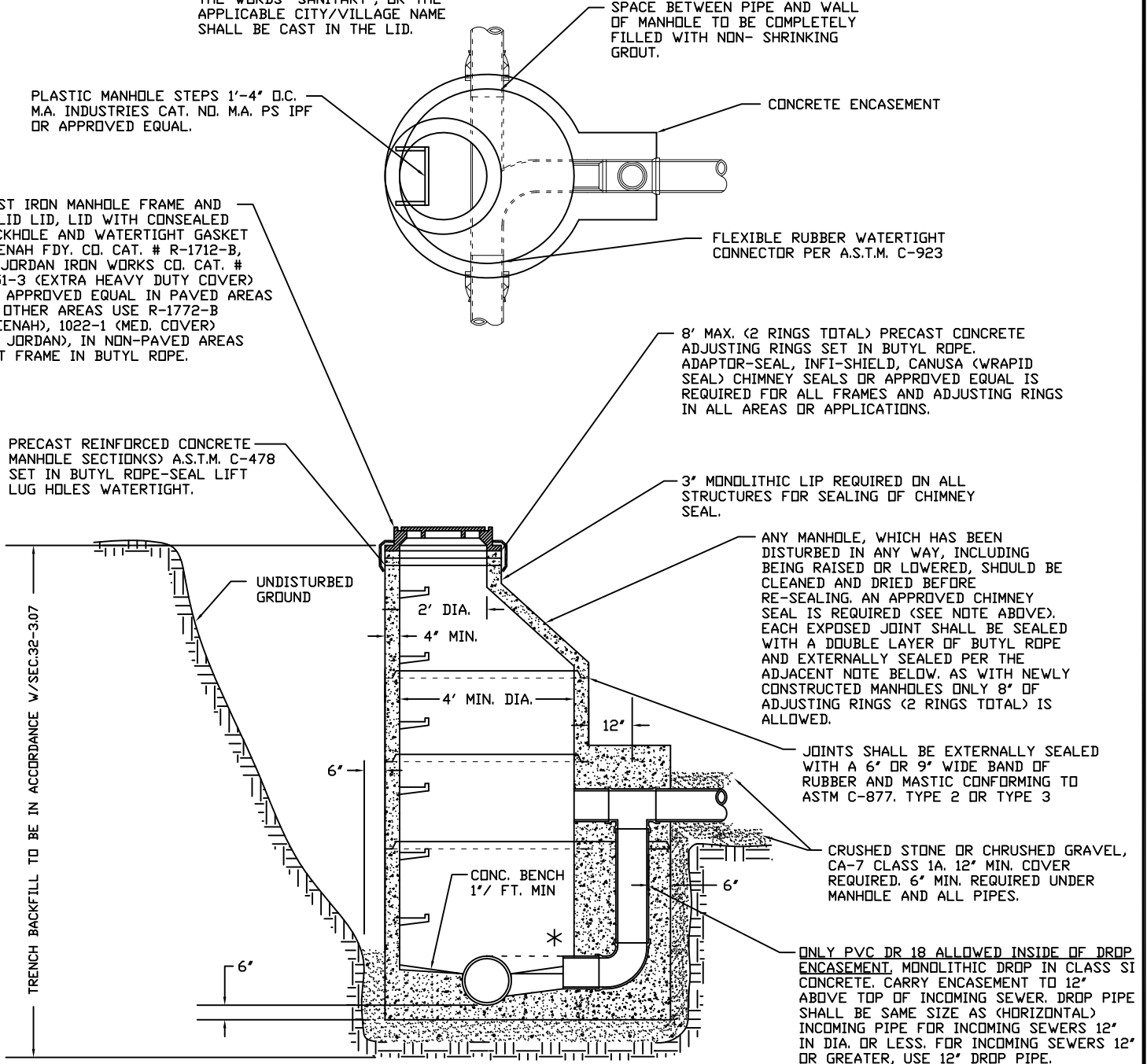
3' MONOLITHIC LIP REQUIRED ON ALL STRUCTURES FOR SEALING OF CHIMNEY SEAL.

ANY MANHOLE, WHICH HAS BEEN DISTURBED IN ANY WAY, INCLUDING BEING RAISED OR LOWERED, SHOULD BE CLEANED AND DRIED BEFORE RE-SEALING. AN APPROVED CHIMNEY SEAL IS REQUIRED (SEE NOTE ABOVE). EACH EXPOSED JOINT SHALL BE SEALED WITH A DOUBLE LAYER OF BUTYL ROPE AND EXTERNALLY SEALED PER THE ADJACENT NOTE BELOW, AS WITH NEWLY CONSTRUCTED MANHOLES ONLY 8" OF ADJUSTING RINGS (2 RINGS TOTAL) IS ALLOWED.

JOINTS SHALL BE EXTERNALLY SEALED WITH A 6" OR 9" WIDE BAND OF RUBBER AND MASTIC CONFORMING TO ASTM C-877, TYPE 2 OR TYPE 3

CRUSHED STONE OR CRUSHED GRAVEL, CA-7 CLASS 1A, 12" MIN. COVER REQUIRED. 6" MIN. REQUIRED UNDER MANHOLE AND ALL PIPES.

ONLY PVC DR 18 ALLOWED INSIDE OF DROP ENCASEMENT, MONOLITHIC DROP IN CLASS SI CONCRETE. CARRY ENCASEMENT TO 12" ABOVE TOP OF INCOMING SEWER. DROP PIPE SHALL BE SAME SIZE AS (HORIZONTAL) INCOMING PIPE FOR INCOMING SEWERS 12" IN DIA. OR LESS. FOR INCOMING SEWERS 12" OR GREATER, USE 12" DROP PIPE.



*** NOTE**

INVERTS OF ALL LOWER PIPES SHALL BE DETERMINED BY MATCHING ELEVATIONS OF THE TOP OF ALL PIPES. HOWEVER, FOR SEWERS 15" OR GREATER, SEE APPROVED PLANS FOR INFORMATION ON INVERTS. ALL FLOW CHANNELS SHALL BE PRECAST INTO THE BENCH.

DROP MANHOLE / NEW CONSTRUCTION

Fox Metro
Water Reclamation District

DESIGNED FMWRD	REVISION	2017
DRAWN KWZ	D Note & Invert Revision	02/03/05
APPROVED KZ, MF	E Chimney Seal & Drop Notes	01/31/06
DATE 05-15-00	F Chimney Seal Notes	04/28/08
SCALE NTS	G Minor Note Mod's	12/14/16
SHEET 1	CAD DWG.	REVISION G
OF 1	JOB NO.	